



FIRE AND EVACUATION PROCEDURE

Purpose

Calvary Family Church is committed to ensuring the safety of all Pastors, other paid staff, volunteers and people in attendance for all events undertaken by Calvary Family Church.

A Fire and Evacuation procedure is in place to ensure the safety of all persons while on site at Calvary Family Church

Fire / Evacuation Information

The KP Centre and all its rooms are fitted with a fire alarm system which is linked to the Qld Fire Brigade. In the event of a fire the alarms will sound and the following procedure will be followed.

In the event a fire is identified and the alarms have not sounded, manual call points (break glass) are located throughout the KP Centre to raise the alarm if required.

Within the KP Centre Fire Extinguishers are located throughout; however in the first instance the process for Calvary Family Church is to evacuate the building and to only fight the fire if safe to do so.

Evacuation Procedure

Church Services:

In case of an Fire/Evacuation;

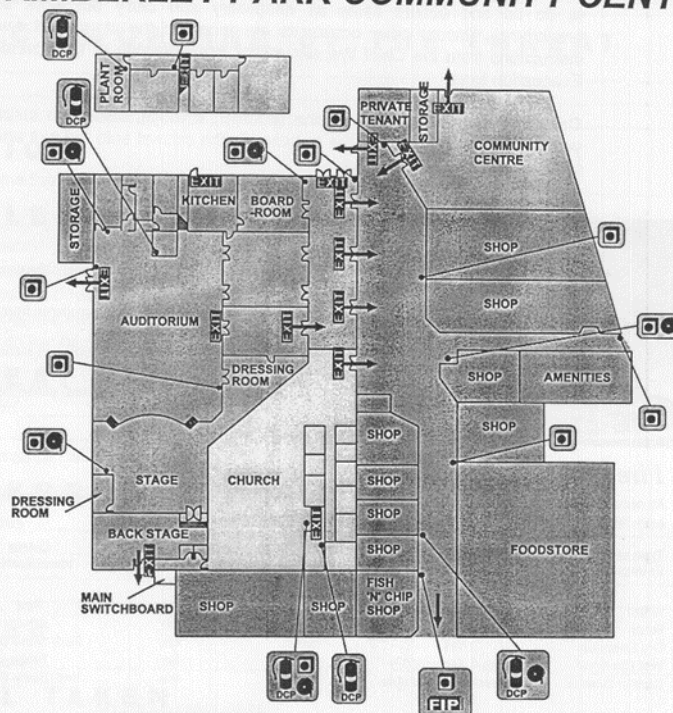
1. The fire alarms will sound. If a fire is located and the alarms have not sounded, call evacuate 3 times and locate a manual call point to raise the alarm.
2. The MC for the church service will take the role of Head Warden and direct the room to evacuate to the identified evacuation point.
3. The Ministry Team Heads for Children and X Teens will ensure the evacuation for children and xteens. Parents can meet the children at the evacuation point.
4. The Head Warden will complete a sweep off all rooms within the KP Centre Aud (including toilets) to ensure all are evacuated safely.
5. The Head Warden or their delegate will meet the Fire Brigade to discuss the situation.
6. All persons are to remain at the evacuation point until the Head Warden has provided clearance to return.

All persons at the KP Centre are encouraged to be familiar with the evacuation signage located through the Calvary Family Church facilities.

Building Emergency Procedures Training Program

EMERGENCY EVACUATION

KIMBERLEY PARK COMMUNITY CENTRE



LEGEND



CARPARK



Fire Extinguisher (DCP)



Manual Call Point



Assembly Area



Fire Hose Reel



Fire Indicator Panel



EXIT Sign

Exit Route

FIRE FIGHTING
ENTERPRISES

Written by:	David Biggs	Date Written:	December 2017
Authorised by:	Scott Short	Review Date:	December 2018